



Biblioteca estense universitaria

Largo S. Agostino 337

I-41121 Modena MO

Tel ++39 + 59 222248

Fax ++39 +59 230195

[b-este@beniculturali.it](mailto:b-este@beniculturali.it)

<http://bibliotecaestense.beniculturali.it>

mus.f.1122

STRADELLA, ALESSANDRO

Mottetto per il santissimo Exultate in Deo, per b., 2  
viol. e org.

Ms., s.d.

Img: ICCU, 2005



Del. <sup>no</sup> Gradella Monetto Basso solo con vv. Per il Santis: Basso

L3

F.  
1122  
(1-4)

Handwritten musical notation on a five-line staff, featuring various note values and rests.

exulta — — te in Deo si —

Deles somnus odia comprimis Altus

cessant Ire in mundo exude

les cessant Ire in mundo exu —

de les Bia

ergo connectite sal — — tus con —

nectite sal — —

tus cia ergo connectite

sal — — tus connectite sal —





nectite sal  
 tus  
 tus  
 Hee sunt  
 muneva Diuina bonita  
 tis  
 terrē sunt prodigia charitatis sunt pro-  
 digia charitatis aman  
 tis aman-tis Redempto  
 ris in la-crymis in fle-tu in la-crymis in  
 fletu triumphat  
 uit sequa  
 mors angu-stias leuissimas angu-stias Dei-





vissimas celestis flectis sors

lestis flectis sors iungat no - sors af -

fectus iungat no - sors affectus Ca -

terna Charitatis catena Charitatis strin -

gat stringat stringat affectus

Exaudi supplices precantes servulos

precantes servulos o Jesu mi exaudi

supplices precantes servulos precantes

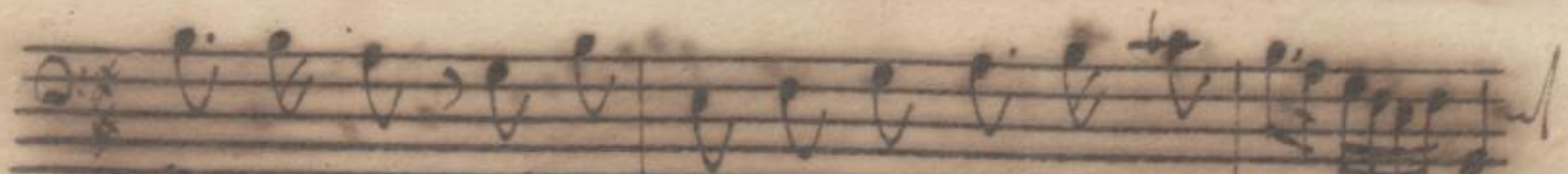
servulos o Jesu mi et nostris

lacrymis amaris vocibus amaris

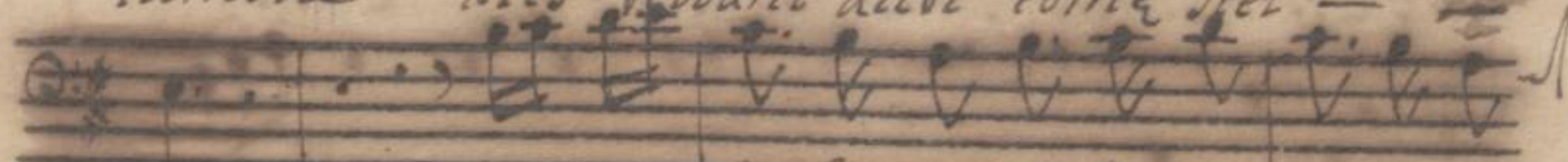


Vocibus benignus sis et nostris  
lacrymis amavis vocibus amavis vocibus  
benignus sis benignus sis benignus  
sis amavis vocibus benignus sis amavis  
Vocibus benignus sis Belli  
cosas horribiles furias rumpe scinde  
frange repelle rumpe scinde scinde  
frange fran — ge fran —  
— ge repel — le stra — ges barbaras  
adipe numine va — diansi concordie

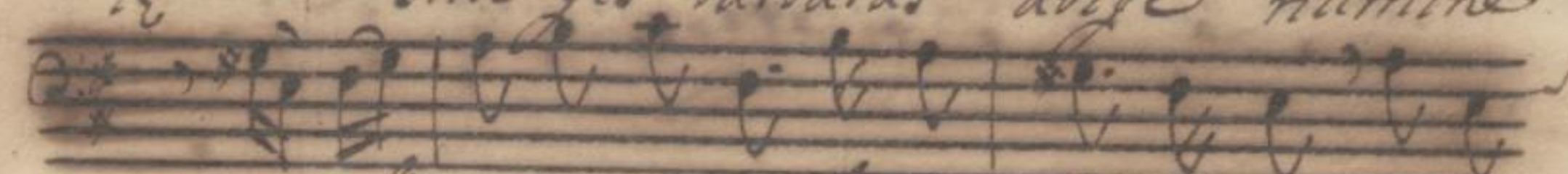




lumine dies reddant auri come stel -



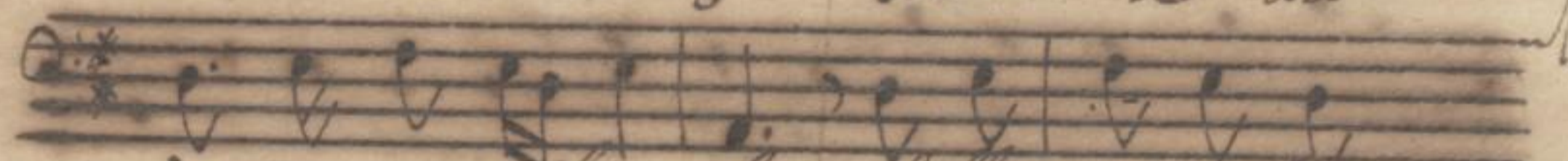
le stra-ges barbaras abige numine



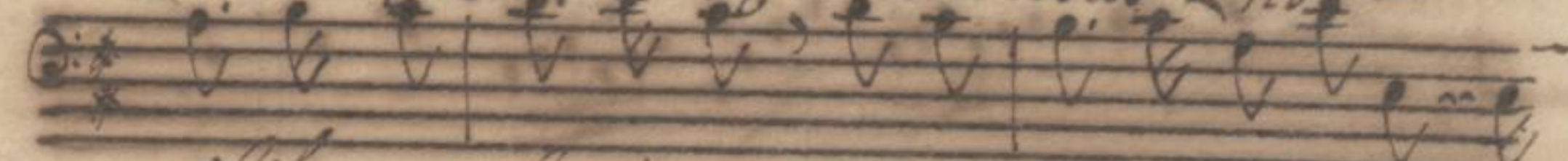
ra-dianti concordie lumine dies



reddant auri come stel - le au -



ri come stel - le belliosas hor -



vibiles furias rumpere scinde frange re



pelle rumpere scinder scinde frange



fran - ge fran -



-ge repel - tez Veni Veni



Veni Veni o Jesu benigne Dulcis



pacis Dulcis pacis nos vo — re as —  
per — ge Dulcis pacis Dulcis pacis  
Dulcis pacis nos vo — re as per — ge —  
et pugnaei ferventes in igne  
stygis aquis infunde infunde submerge  
et pugna — ei fer —  
vantes in igne et pugna —  
ei ferventes in igne —  
stygis aquis stygis aquis infunde sub —  
merge submer



*ge infunde in-*  
*funde submer - ge Veni Veni Veni*  
*Veni o Jesu benigne Dulcis pacis*  
*Dulcis pacis nos ro - - re asper - ge*  
*Dulcis pacis Dulcis pacis Dulcis*  
*pacis nos ro - - re asper - ge Dulcis*  
*pacis nos ro - - re asper - ge*



Del S.<sup>to</sup> Stradella Motetto Basso solo con vv. y. il Sancti.<sup>no</sup> Viol. Po

The image shows a page of handwritten musical notation. It consists of ten staves of music. The notation is in a single system, with each staff containing a line of music. The first staff has a treble clef and a common time signature. The second staff has a large 'L' and a '3' written to its left, and the word 'sinf.' written above it. The third staff has the word 'Esultate' written above it. The music is written in a cursive, handwritten style. The paper is aged and shows some staining.

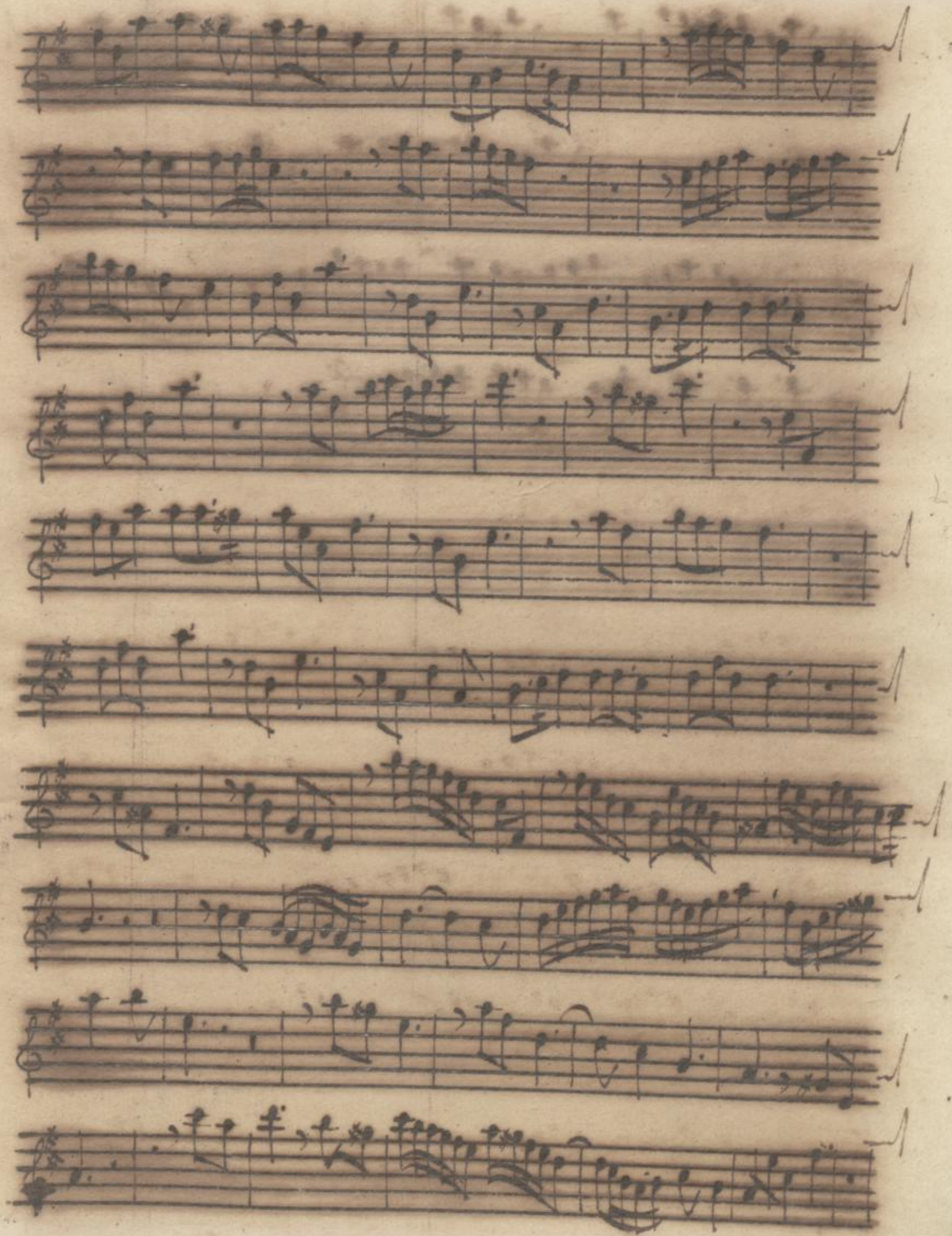


*Hee sunt. sin fa*

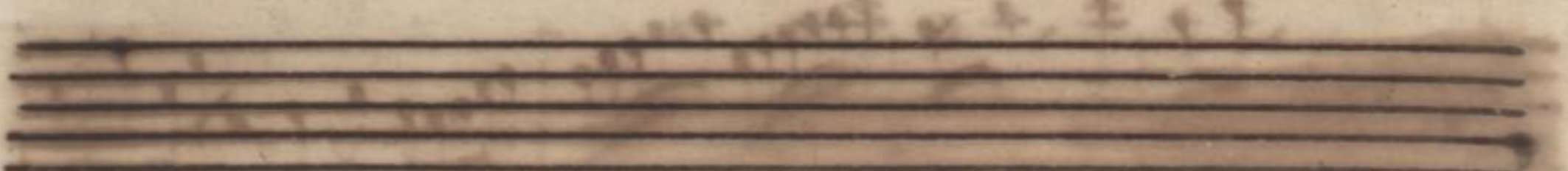
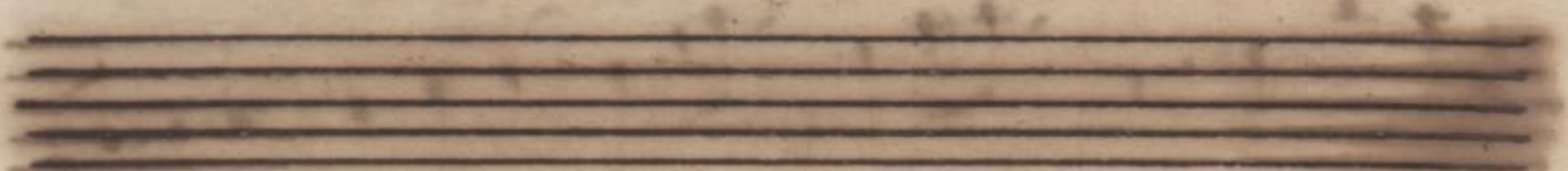
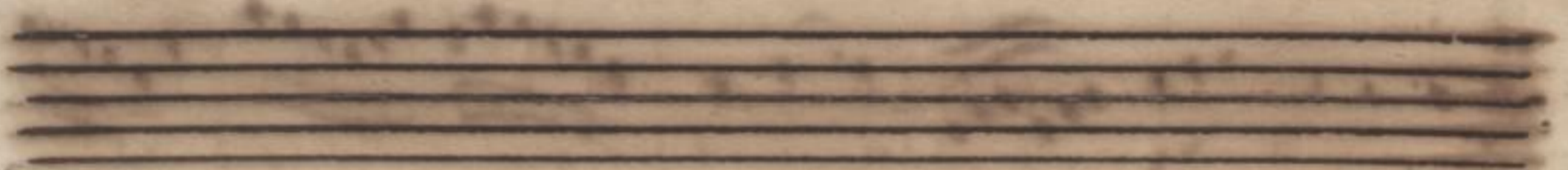
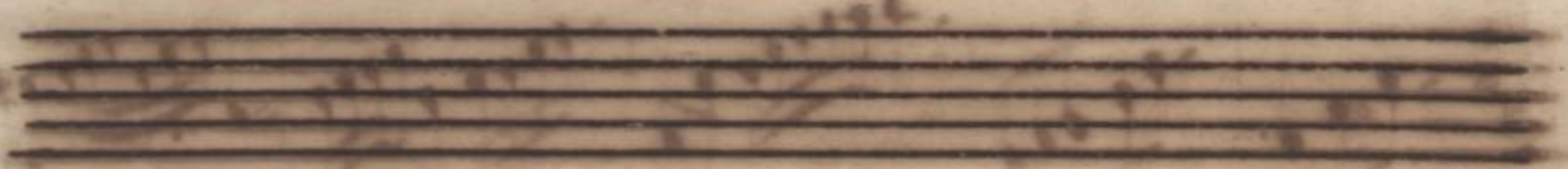
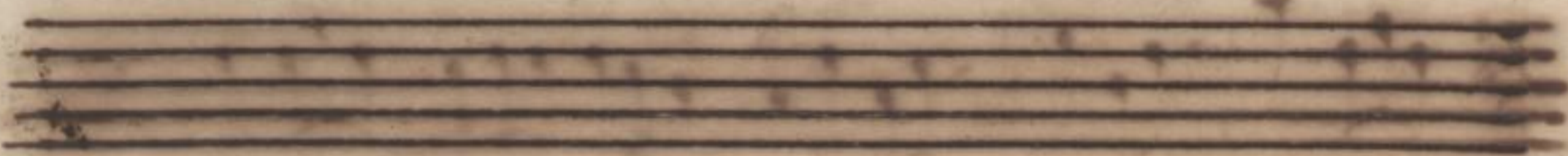
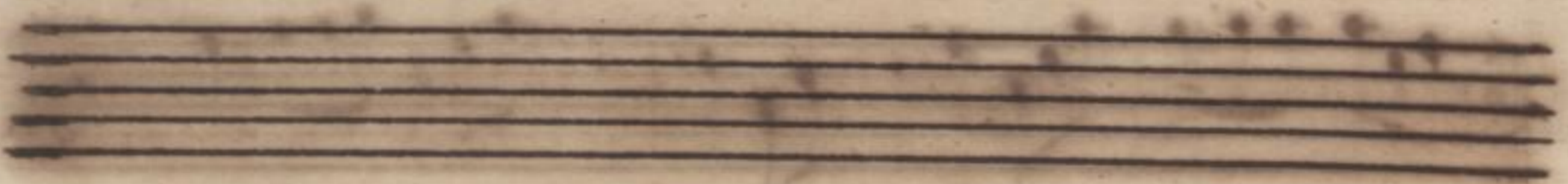
*Handi*

*Belligeris*











Del s.<sup>to</sup> Stradella. Minuetto Basso solo con vv. y il sarrisi. <sup>mo</sup> Viol. 2.<sup>a</sup>

L. 3  
0





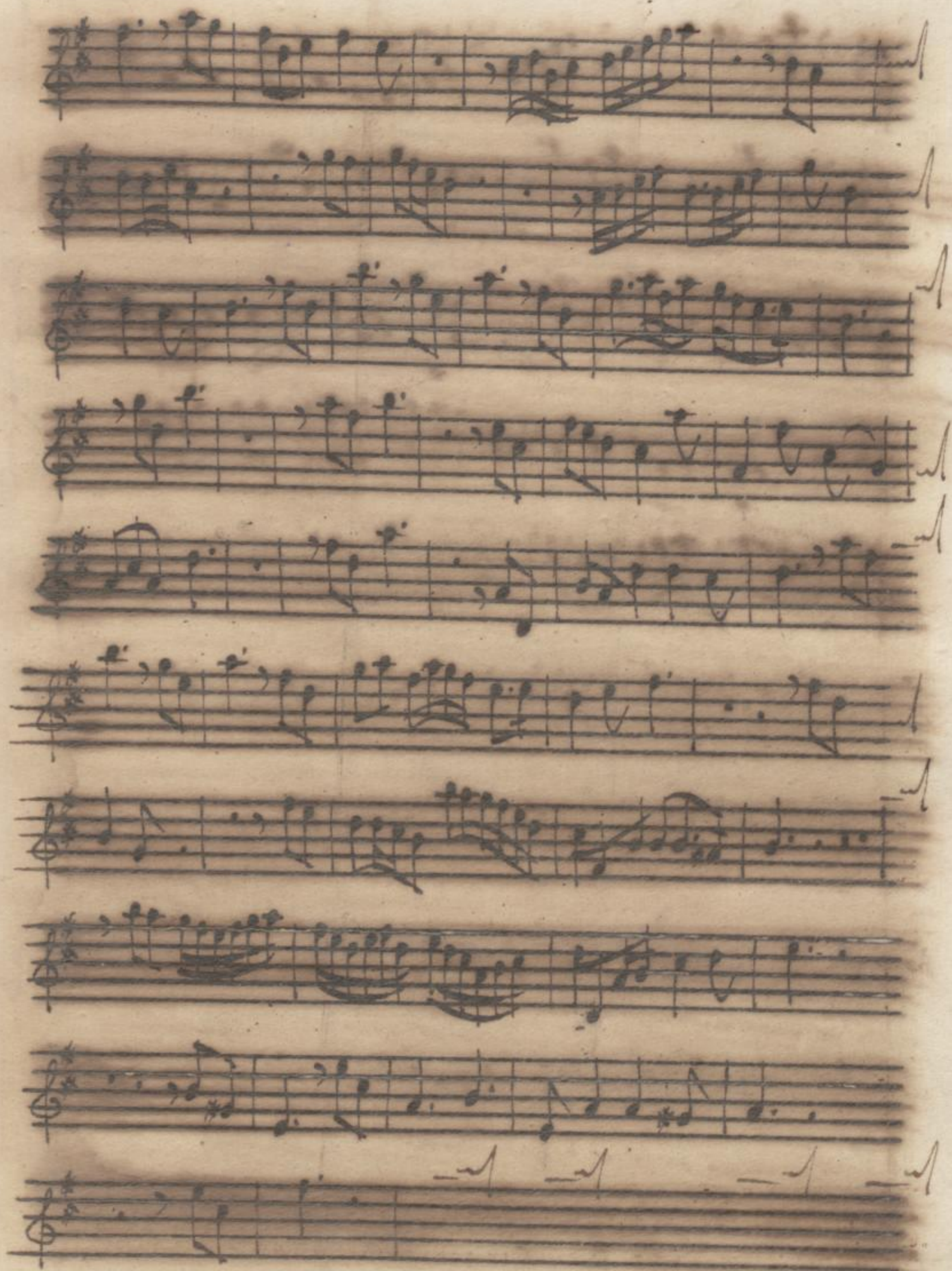
*Hec sunt. Sinfa*

*Exaudi*

*Bellicosas.*

This image shows a page of handwritten musical notation on aged, yellowed paper. The score consists of ten staves of music, each beginning with a treble clef and a key signature of one sharp (F#). The lyrics are written in a cursive hand below the staves. The first staff has the lyrics "Hec sunt. Sinfa". The second staff has "Exaudi". The sixth staff has "Bellicosas.". The music features various rhythmic values, including eighth and sixteenth notes, and rests. The paper shows signs of age, with some staining and foxing.







Handwritten musical notation on five staves. The notation is written in dark ink on aged, yellowish paper. Each staff begins with a treble clef and a key signature of two sharps (F# and C#). The first staff contains a melodic line with various note values, including eighth and sixteenth notes, and rests. The second staff continues the melody with similar note values. The third staff features a more complex melodic line with many beamed notes. The fourth staff shows a melodic line with some beamed notes and rests. The fifth staff contains a melodic line with many beamed notes, ending with a double bar line and a repeat sign.

Eight empty musical staves, each consisting of five horizontal lines. The staves are arranged in two groups of four, with a small gap between the two groups. The paper is aged and yellowed, and there are some faint smudges and stains on the staves.



Del Sr. Stradella. Motetto Basso solo con vi. y. il Saritis. <sup>mo</sup> Organico

*L* *3* *Sinf.*

*0*

*Gultate*



Handwritten musical score on aged paper, featuring ten staves of music. The notation includes various note values, rests, and clefs. The lyrics are written in a cursive hand below the staves.

*Hee sunt*

*si ffa*

*Handi.*



A handwritten musical score consisting of ten staves. The notation is in a single system, likely for a single instrument or voice. The music is written in a cursive, historical style. The first five staves show a melodic line with various note values and rests. The sixth staff begins with a double bar line and a key signature change to one flat (B-flat major or D minor). The word "Bellizosa" is written in a decorative, cursive hand above the sixth staff. The remaining five staves continue the melodic line with similar notation.

*Bellizosa*





Handwritten musical score consisting of 11 staves. Each staff begins with a treble clef and a key signature of one flat (B-flat). The notation includes various note values, rests, and bar lines. The paper shows signs of age, including foxing and staining.

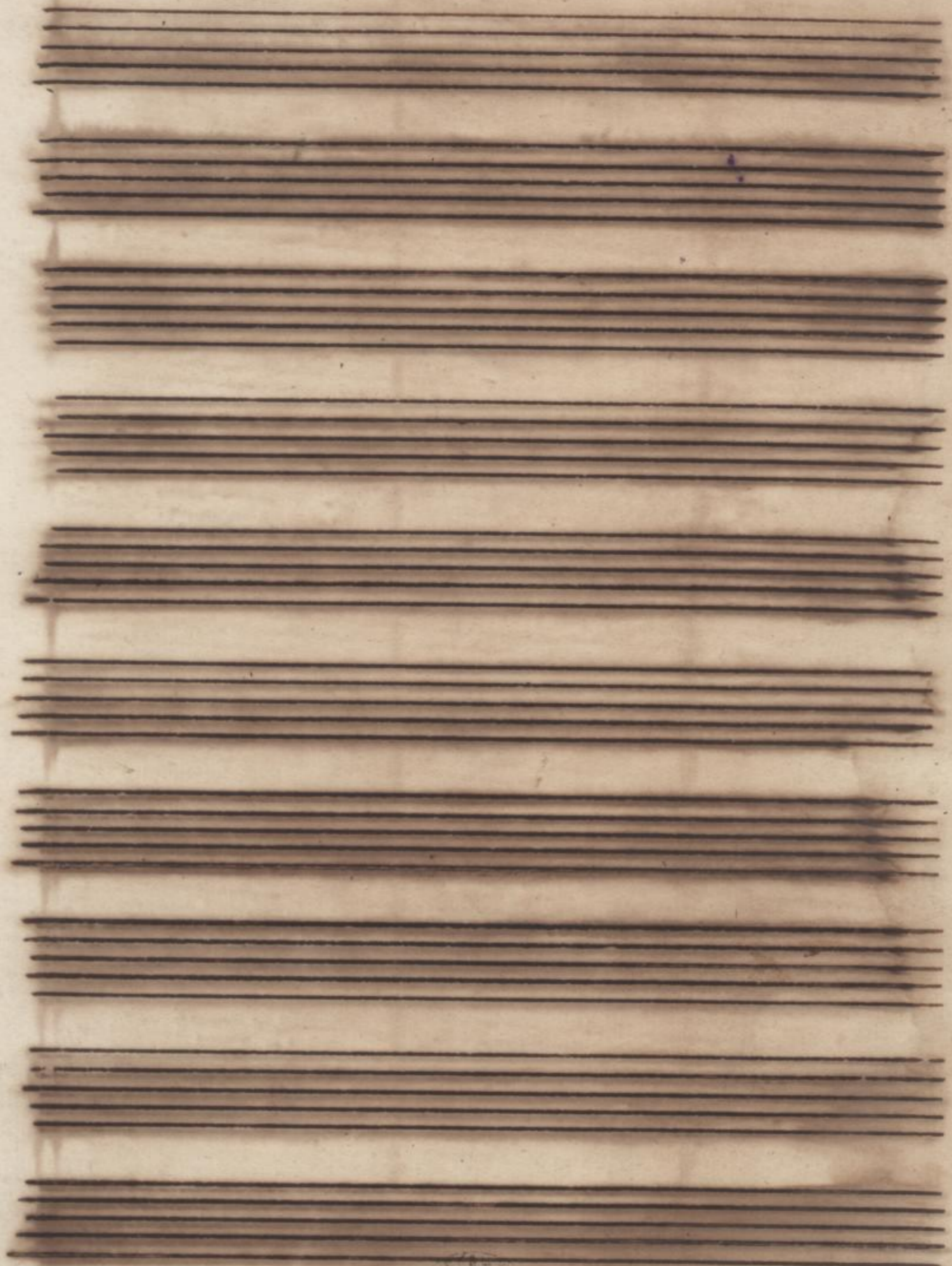




Handwritten musical notation on six staves. The notation includes various note values, rests, and clefs. The paper shows signs of age and staining.







cc. 12



*Manuscript of the ... e.D.C.*

F.  
1122  
I  
(1-H)

